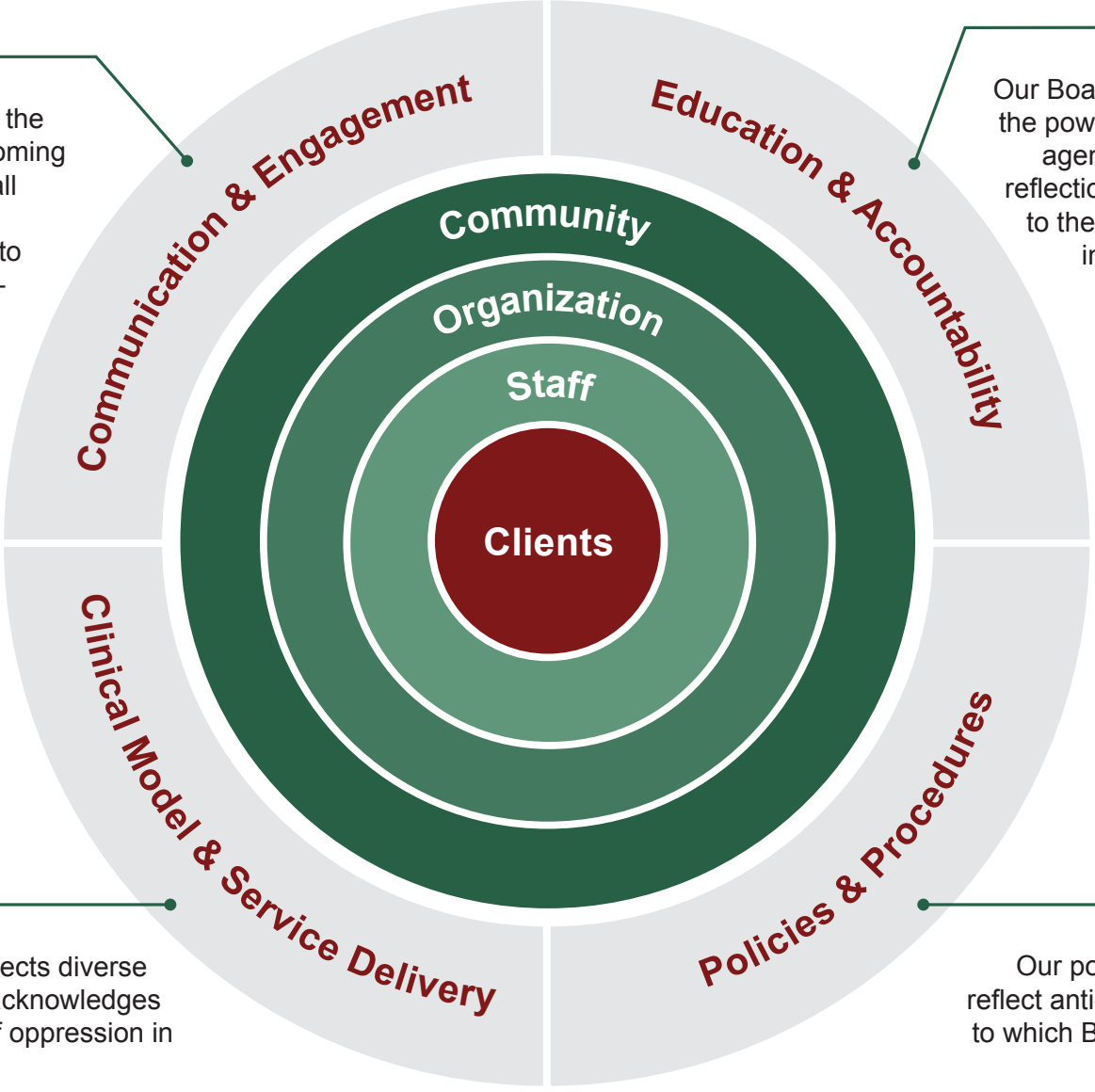


**HEARTWOOD**  
HEALING CENTRE

# Anti-Oppressive Practice Framework

We are understood in the community as a welcoming and safe(r) place for all people through our ongoing commitment to social justice and anti-oppressive practices.



Our Board and staff recognize the power and privilege of the agency, participate in self-reflection, and are committed to the ongoing learning and implementation of anti-oppressive practices.

Our clinical model reflects diverse ways of healing and acknowledges the intersectionality of oppression in trauma recovery.

Our policies and procedures reflect anti-oppressive principles to which Board, staff and clients are held accountable.